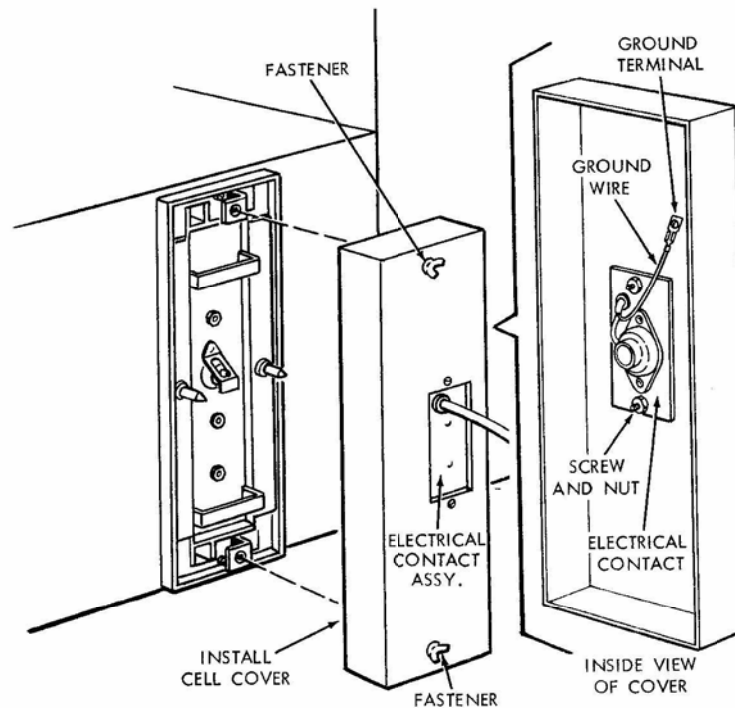


ON CELL REPLACEMENT PLEASE VERIFY THAT THE ELECTRICAL CONTACT IS INSTALLED PROPERLY TO THE CELL COVER. SEE VIEW BELOW FOR CORRECT ASSEMBLY.



1. The electrical contact shall be installed on the inside of the cell cover with two screws and nuts.
2. The ground wire shall be installed to the terminal on the cell cover.
3. Install new replacement cell -- Cell must be fully inserted for fasteners to engage.
4. Attach the cell cover to the mounting template with the two quarter turn fasteners.
5. Refer to manual for other service hints.

836-0066