

## Operation Timetable

### Day 1:

The ClearWave action immediately starts to loosen existing scale in both the hot and cold water systems. One should find soap lathers more easily.

### Day 5 and onwards:

Scale begins to break down and come off water heater elements (immersion heaters) and tanks. Most particles are microscopic and will flow through your water system, but some small particles may be seen in the water coming from the hot water tap.

### Day 10 to 16:

It should be noticeably easier to wipe clean ceramic, plastic, glass, and metal surfaces. By now the quantity of bath soap, dish soap, laundry detergent, and laundry softening agents can be reduced. Scale should have loosened on faucets, showerheads, and frequently used appliances that boil water (such as coffee makers).

### Day 16 and onwards:

Scale should continue to loosen from faucets, showerheads, and pipes. With the continuing breakdown and reduction of scale from the heating surfaces of water heaters, water should heat quicker using less energy to achieve the desired temperature.

### After 1 to 2 months:

Any scaly crust or stains in toilets or under faucets should be significantly reduced. No new stains or crust should form. Mold that attaches to scale will begin to disappear from shower curtains and, once cleaned, should not reappear. Depending on the water hardness in the area, the full effects can take up to 12 weeks, especially if the system has been heavily scaled up over many years.

## Easy Installation

### STEP 1



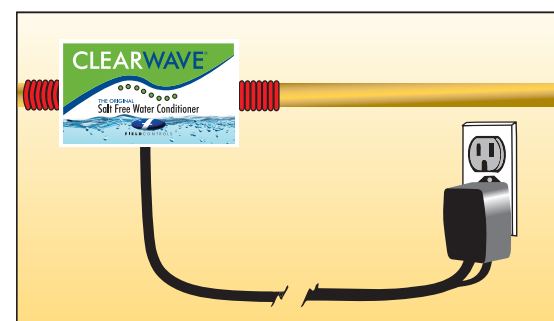
Mount directly to pipe as close to the cold water entry as possible with supplied tie-wraps.

### STEP 2



Coil one red antennae counter-clockwise, the other clockwise, and fasten with supplied tie-wraps or electrical tape. The tighter the antennae are coiled, the better ClearWave functions.

### PLUG IN & PROTECT



The ClearWave is supplied with 15 ft. of 18 gauge power cord and transformer, and can be extended up to 100 ft.

## Benefits

- Prevents scale build-up
- Salt free
- Environmentally friendly
- Removes existing scale
- Maintenance-free
- Easy to install

## Applications:

- Ice makers
- Dishwashers
- Washing machines
- Boilers
- Humidifiers
- Swimming pools
- Water heaters (gas, electric, and tankless)

Note: Multiple units may be required in some applications.

### Specifications

Capacity		Electrical Specs		
Max. Pipe Diameter	Max. Flow Rate	Volts	Watts	Amps
1"	28 gpm	18 VAC	5	.09

Note: Units can be combined and used in series for larger pipes.

### System Solutions for CW-125 Model

Water Hardness		Recommended Solution
Grains	PPM	
Up to 25	Up to 425	ClearWave®-125
25 plus	425 plus	ClearWave®-125 prior to traditional water softener

# CLEARWAVE®

## THE ORIGINAL Salt Free Water Conditioner

**Bel-Aire**  
ElectronicAirCleaners.com



**FIELD CONTROLS**  
Improving Indoor Environments



FORM #4268

©2017 Field Controls Co. | 2630 Airport Road | Kinston, NC 28504  
P: 252.522.3031 | F: 252.522.0214 | contact@fieldcontrols.com  
fieldcontrols.com



The ClearWave® is a revolutionary product that conditions hard water without the expense and hassle of salt, chemicals, or traditional hard water systems.

The ClearWave attacks hard water particles with electro-magnetic waves, treating the entire water system in your home and helping prevent and reduce hard water problems.

Calcium and magnesium particles tend to stick to each other and any surface they contact, forming layers of hard scale. This scale build-up damages water heater elements and restricts water flow. The ClearWave “neutralizes” these particles. Once treated by the ClearWave Water Conditioner, calcium and magnesium particles remain in suspension, flowing freely through the system and down the drain.

## ClearWave Benefits

- Eliminates scale build-up
- Works with any type of pipe
- No plumbing or maintenance
- Economical to operate
- Ideal for water heaters (including tankless models)

The ClearWave not only prevents new scale formation, over time it helps break down existing scale, protecting the water heater, pipes, shower heads, and appliances.

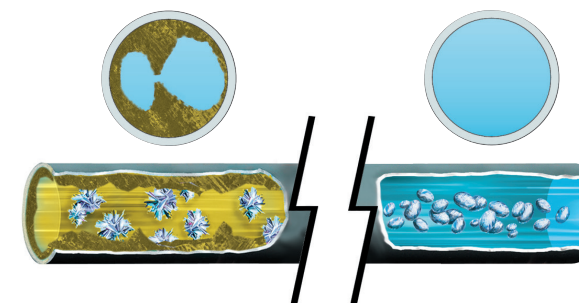
The ClearWave is maintenance-free, environmentally friendly, and uses less water than traditional water softeners. The ClearWave works on all types of pipes including copper, PVC, PEX, galvanized, and stainless steel.

## How the ClearWave® Works

The ClearWave Water Conditioner generates a series of electro-magnetic waves that affect hard water crystals (calcium and magnesium) in water so that they are unable to stick to each other, pipes, or fixtures. These enhanced microscopic particles then contact existing scale and cause it to loosen, break down, and dissolve.

### The Problem

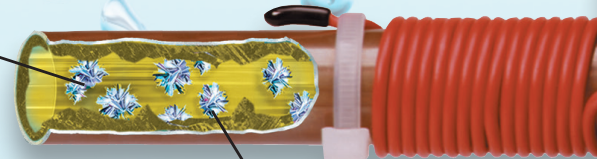
Hard water causes scale build-up in pipes, water heaters, fixtures, and appliances.



### The Solution

The ClearWave Water Conditioner helps reduce scale build-up & prevents new scale from forming.

Hard Calcium Carbonate Crystals



Scale Build-up



Scale Free

ClearWave® Treated Water

**Please note:** The ClearWave is NOT a water softener and does not REMOVE calcium or magnesium from the water.